



#PMAARTATHOME

WEEK 8



Foil Monoprinting

Monoprints are one-of-a-kind prints made from a unique matrix or combination of matrices - a block, stamp, or in this case, painting on foil. Create a painted composition on a sheet of tinfoil with acrylic or tempera paint. Use brushes, spatulas, forks, toothpicks, etc. to create interesting textures in the paint on the foil. Once you're happy with it, press a sheet of paper onto the paint, and rub your hand evenly over the paper to apply pressure. Recreate similar compositions or play with other paint combinations, each one will be unique!



Marbled Paper

You can create beautiful sheets of marbled paper with things you have at home. Start by spraying a layer of shaving cream into a rectangular pan or dish at least 1 inch deep, and smooth it out with a spatula. Add drops of food coloring on top, and use a toothpick or fork to make marble patterns of color on the surface of the shaving cream. Press a sheet of paper onto the marbled surface with enough pressure to make sure the sheet is entirely touching the cream. Peel back the sheet and use a clean spatula, ruler, or squeegee to clean off the shaving cream.



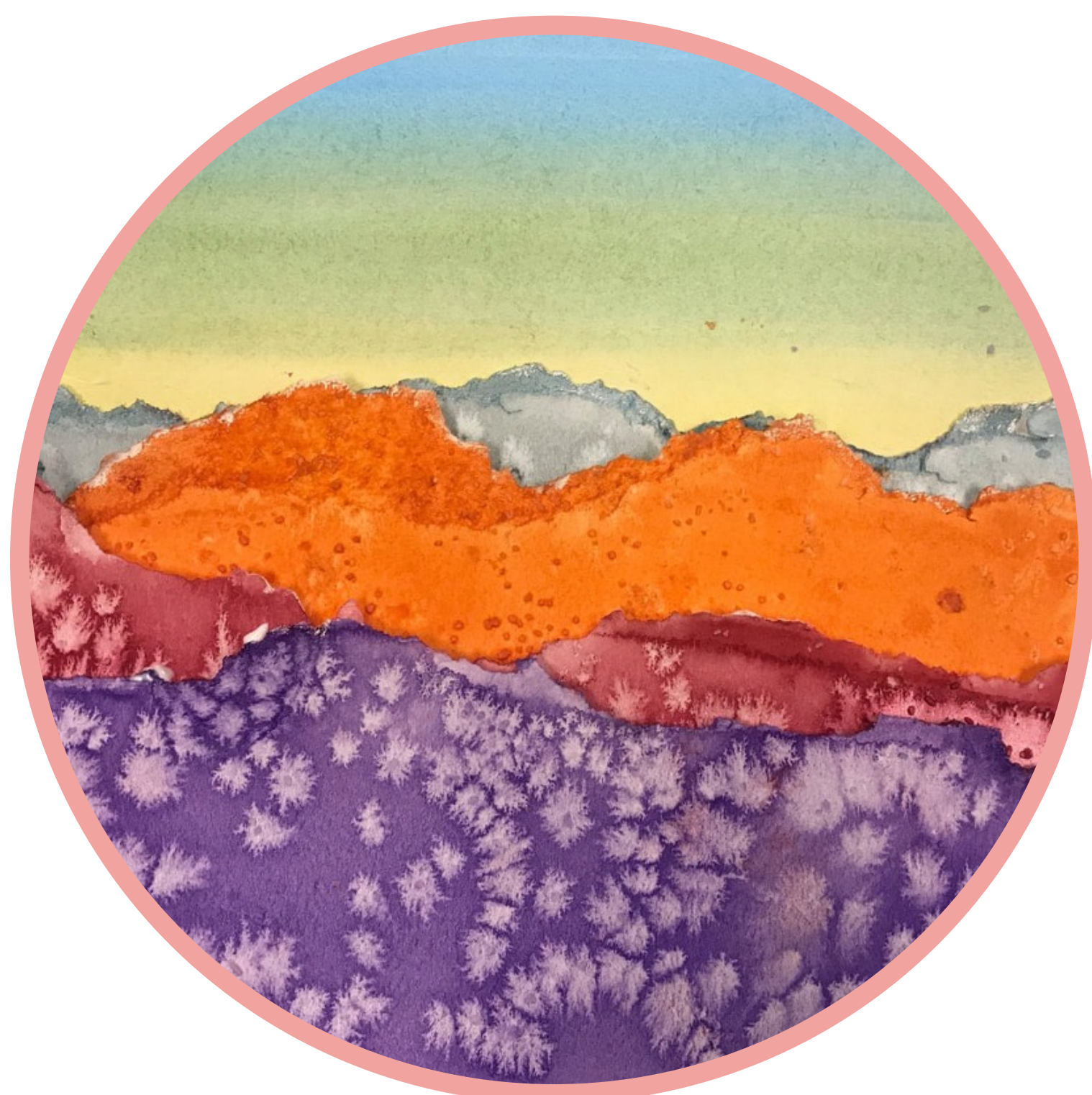
Q-Tip Pointillism

Take a page out of Seurat's book and paint a picture with dots! Make a pallet of acrylic, tempera, or liquid watercolor. Dip the q-tips in the paint and press dots onto your paper. You can pre-draw an image to follow or make something abstract. Share your finished paintings in the comments!



Geometric Sculptures

You can make your own modular sculptures out of cardboard and paint. Trace out geometric shapes onto a cardboard sheet and cut with a box cutter or scissors. Cut slots about 1/8 inch wide into each side of the shape. Paint each piece and let dry completely. Match up the cut slots and build your dream sculpture!



Torn Paper Landscapes

Create imaginative landscapes with torn paper or repurposed paintings. Select color construction paper, or create paintings with the color and texture matching your landscape - grass, flowers, dirt, rocks, etc. Tear along a guided line to create your desired shape to create hills, plants, water, or clouds. Glue the pieces onto the base sheet and bring your landscape to life.



Paper Plate Masks

These paper plate masks are an easy way to create any character you'd like. Start by cutting a paper plate in half and adding holes for eyes. Add features to your mask like ears, hair, noses, and patterns with cut construction paper or by drawing them on. Add a string or glue to a popsicle stick to make it wearable.